

Day Camp 2025 Parent Guide

Welcome!

Thank you for enrolling your child in Sandhills Cub Scout Day Camp! We will have an out of the world time. This guide will help you prepare your child for an exciting, safe, fun and adventurous experience. If you have any questions or concerns, please feel free to contact us.

Sandhills Cub Scout District Day Camp

Spout Springs Church
346 H M Cagle Dr, Cameron, NC 28326

Camp Director
Zach Yoklik
zyoklik@gmail.com
(801) 479-5460

Forms mailed to:
Davie Cox
115 McFayden Dr.
Fayetteville NC 28314

Registration and Payment Questions:
Occoneechee Council
(919) 872-4884

What to bring:

- Water bottle that your child can open easily
- Lunch - we won't have microwaves, so pack accordingly
- Hat
- Needed medication (epi-pens, inhalers, etc)
- Sunscreen
- Closed-toed, fully encapsulating shoes
- A small first aid kit*

***A note about first aid kits - A few band-aids goes a long way to keeping kids happy. A few first aid items can help with small scrapes, but we don't need a whole hospital. We have an amazing trained nurse on site with the best bedside manner!**

What to leave:

- Electronics*
- Toys
- Knives of any kind
- Open-toed shoes
- Lighters, matches or any other flame-producer
- Snacks with peanuts
- Laser pointers

***A note about electronics - We suggest to avoid bringing any electronic devices, toys, or anything that will prove distracting to other campers. We will provide an engaging program, and there is very little down time. Electronics can and likely will be broken, fought over, and used inappropriately. They are best left at home.**

Forms

There may seem to be a lot of forms, but they all are important! Your medical form A & B form has a lot of great information that we need to help ensure your kid remains healthy. Allergies and accommodations allow camp staff to know how help your child and when to modify planned activities to ensure safety.

Be sure to take a look at what medications you feel comfortable having our medical team administer in your absence. June is hot and sunscreen is a must! Think about giving permission to apply extra sunscreen throughout the day so your child avoids sunburns. Bug bites can be treated with a light topical cream that helps reduce pain/itching, but we can't do it unless you give permission on the B2 side of the form.

Forms required by May 15:

- Health forms A & B for **all** those on camp (kept by health officer, found at)
- Behavior Agreement for all Scouts (kept by registrar, found at back of this book)
- North Carolina Sunscreen Form (kept by den walker, found at back of this book)
- Approved Pickup form (kept by den walker, found at back of this book)
- Media Release (kept by den walker, found at back of this book)

If all forms are not turned in by May 15, a \$10 late fee will be assessed per scout and due at start of camp. Campers will not be allowed to participate in camp without these forms.

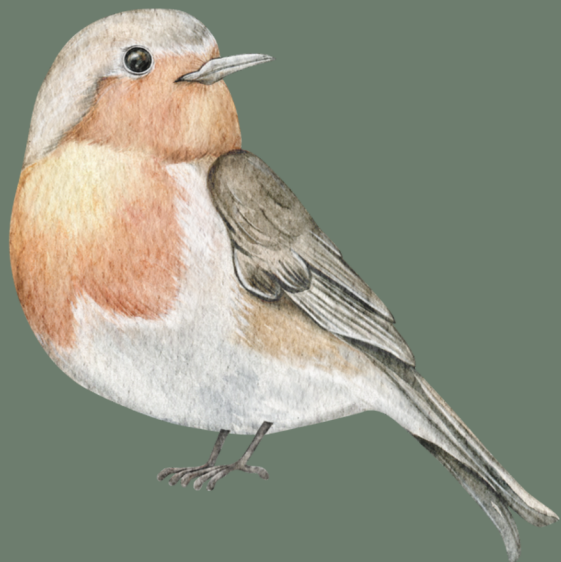
Schedule:

Mon-Thurs Camp Day: 8:30-4:30

Drop off: 8:30-8:50
Opening: 8:50-9:10
Rotation 1: 9:15-9:55
Rotation 2: 10:00-10:40
Rotation 3: 10:45-11:35
Lunch: 11:40-12:20
Rotation 4: 12:25-1:05
Rotation 5: 1:10-1:50
Rotation 6: 1:55-2:35
Rotation 7: 2:40-3:10
Rotation 8: 3:15-3:55
Closing: 4:00-4:30



Friday Camp Day: 8:30-1:30



Drop off: 8:30-8:50
Opening: 8:50-9:10
Rotation 1: 9:15-9:55
Rotation 2: 10:00-10:40
Rotation 3: 10:45-11:35
Rotation 4: 11:40-12:25
Lunch: 12:25-1:05
Closing: 1:10-1:30

Behavior Expectations

Everyone deserves to be treated with respect. Hitting, grabbing, pushing, or any other physical contact will not be tolerated. We will use kind words with your scouts and ask that we are treated the same. Repeated problems take away from everyone's enjoyment, so we will work with you to find strategies to help your child in the event of conflict.

Volunteers will guide scouts to each event, so wandering off, not listening, or talking over others will be addressed to ensure everyone is safe and having a the best time. **If the behavior cannot be resolved, we will call the parent to take the scout home.**

Policies

- Throwing rocks is not allowed
- No fireworks of any kind
- No alcoholic beverages of illegal substances
- No personal firearms or bows
- All vehicles must be parked in the designated place.
- All guests must check in immediately
- No smoking will be allowed in front of scouts. There will be a designated area
- No pets will be allowed at any time

How can you help?

All camp staff supporting your scout are volunteers. We give our time because children need a space to learn, have fun, and grow in a supervised manner. We would love for you to help us take care of your scouts by volunteering for an afternoon, a day, or the whole week! If you can't come out during the week, we always need help setting up and tearing down. Your time is appreciated, but if you can't give that, we can take supplies, snacks, ice, or other help to make this week happen. It takes a lot of coffee to keep up with cubs, so anything is appreciated. All volunteers **MUST** have a current Youth Protection Training (YPT) certification. YPT takes an hour to complete, but it establishes how to keep our precious kids safe.

Camp jobs:

Den Walker: Each den needs two adults to keep scouts on schedule, drinking water, stay positive, etc.

Educational Positions: Teach our cubs a variety of tasks! Archery, crafting skills, rocket building, cooking and many more need your help this camp blast off!

Stations

Field Station - Scouts will learn about local plants, animal tracks and map reading

Nature Crafts - Campers will be able to build and create out of this world crafts and art projects

Research Center (STEM) - from building bird's nests, to geology and meteorology, scouts will love sciences

Forest Fun (Games) - Fun and physical activity for all our scouts

Outdoor Skills - Webelos/AOLs will learn advanced wilderness skills

Campfire Cooking - Scouts will learn how to cook to feed themselves during their voyage in the stars

Illness

Please do not come to camp if you or your scout have any of the following symptoms:

- Temperature of 100°F or higher
- Vomiting or diarrhea in the last 24 hours
- Body rash with itching and fever
- Lice
- Red, itching, gooey or crusty eyes

If your scout has any of these symptoms, we will call you and ask you to take them home for the day.

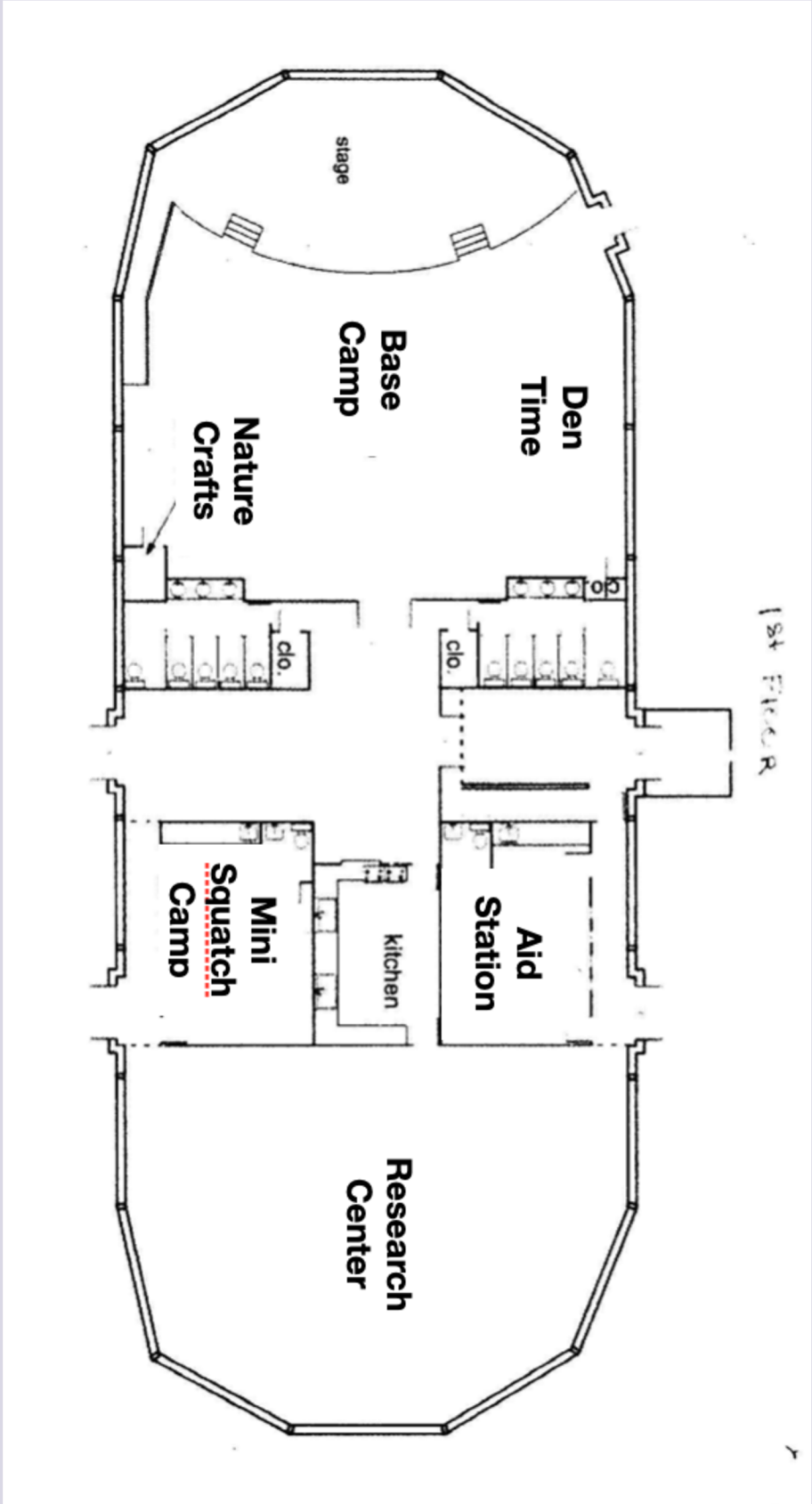
Emergencies

We coordinate with multiple emergency services to ensure rapid response in the event of an emergency. Our staff is trained in Red Cross CPR and other emergency medicine in the event of an emergency. Camp staff has plans for inclement weather, fires, illnesses, and more. Be assured that our top priority will be to keep your scout safe. In the unlikely event of something happening, we will communicate with you as soon we know the kids are safe. Detailed information for communication will be available at the parent orientations.

Exterior Map



Interior Map



Behavior and Code of Conduct Contract

While we recognize that children need discipline at some point and time, a Scout who consistently requires disciplinary action creates an environment that is not enjoyable and potentially unsafe for him and others. All Scouts attending Cub Scout Day Camp will follow camp rules and standards of behavior. Carefully read the contract below with your child, and sign it. By signing the contract, both you and your child agree to camp expectations and fully understand the consequences of inappropriate behavior. All Campers as well as staff are expected to be respectful and kind to others.

As a Scout, I _____, understand that a camp that is safe and fun for everyone must be maintained. I understand that un-scout like behavior will result in disciplinary action in accordance with the Camp Discipline policy. Certain behavior, including but not limited to hitting, biting, and inappropriate language, bullying or creating an unsafe environment will result in a call to my parents for immediate dismissal from camp.

As a parent/guardian, I _____, understand and have discussed the camp expectations with my child. I agree that if my child is dismissed from camp for disciplinary reasons, I am required to pick them up immediately and without reimbursement of fees.

Parent/Guardian Signature _____ Date: _____

Scout Signature _____ Date _____

** This contract is required to be signed by Cubs and parents/guardians prior to boy being allowed to attend day camp.**

Sandhills Day Camp Sunscreen Permission Form

Name of Child _____

The staff of Sandhills Day Camp may apply sunscreen to exposed skin surfaces, prior to sun exposure, to my child. Sunscreen will not be applied to any broken skin or if a reaction has been observed. Any reaction observed by staff will be reported to the parent/guardian.

_____ I will provide my child with his/her own sunscreen with a minimum of SPF 15.

_____ My child may use sunscreen provided by day camp.

Parent/Guardian Signature _____

Date _____

Media Release

I hereby assign and grant to Sandhills Day Camp, Occoneechee Council, and the Boy Scouts of America the right and permission to use and publish the photographs/film/videotapes/electronic representations and/or sound recordings made of me or my child at all Scouting activities, and I hereby release the Boy Scouts of America, the local council, the activity coordinators, and all employees, volunteers, related parties, or other organizations associated with the activity from any and all liability from such use and publication. I hereby authorize the reproduction, sale, copyright, exhibit, broadcast, electronic storage, and/or distribution of said photographs/film/videotapes/electronic representations and/or sound recordings without limitation at the discretion of the Boy Scouts of America, and I specifically waive any right to any compensation I may have for any of the foregoing,

() yes () no

Parent/Guardian Signature _____

Printed Name _____

Date _____

SandhillsDay Camp Pickup Form

SCOUT NAME		RANK
EMERGENCY CONTACTS		
Name	Home number	Cell Number
Mother:		
Father:		
Emergency Contact (other than parent)		
Person(s) authorize to pick up scout other listed above		
Person(s) NOT allowed to pick scout		
Medical Conditions and/ or Physical or Behavioral Characteristics Camp Staff must be aware of:		